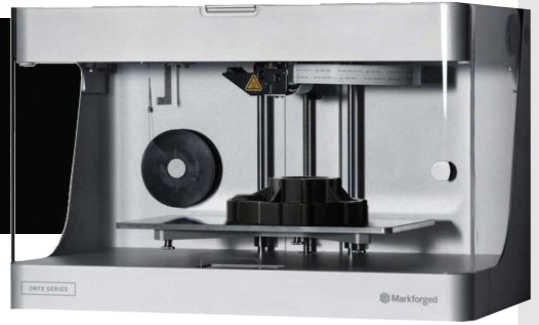
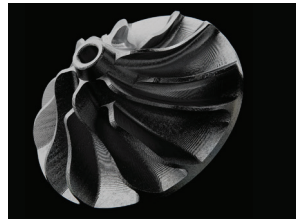




Prints composite parts as strong as aluminum. The Mark Two combines Markforged's unique continuous carbon fiber reinforcement with workhorse reliability for the strongest, most versatile parts. As an industrial 3D printer, the Mark Two is ideal for printing jigs and fixtures, finished parts, and high-end, functioning prototypes.



AVAILABLE MATERIALS:

- Base Material: Onyx filament – Nylon mixed with chopped carbon fiber. High-strength, heat & chemical resistant.
- Carbon Fiber: Continuous filament for high strength performance & lightweight. 10 times the strength than Onyx alone.
- Fiberglass: Continuous fiberglass filament adding 5 times the strength of Onyx alone. Less expensive than Carbon Fiber.
- Reinforcement infill materials (can be combined with Onyx)
- HHT Fiberglass: High Strength, High Temperature fiberglass filament. Designed for high temperature environments over 221°F with a heat deflection of 284°F.
- Kevlar: Continuous Kevlar filament designed for abrasion resistance and impact resistance.

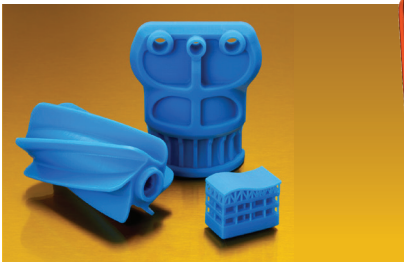
Markforged Mark Two

BUILD VOLUME:
12.60" x 5.20" x 6.06"
(320mm x 132mm x 154mm)

RESOLUTION:
100 Micron

Form Labs Form 3

Top of the line resin printing in a variety of materials suited for your specific application. From wear parts, bushings, guides, molds or any prototype part you are working on, the Form 3 produces robust, strong parts with high precision.

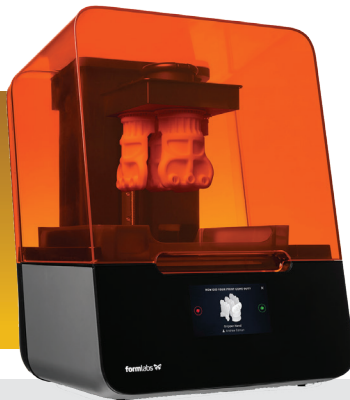


BUILD VOLUME:
5.70" x 5.70" x 7.28"
(14.5cm x 14.5cm x 18.5cm)

LAYER THICKNESS:
.0009" – .011"
(25um – 300 um)

AVAILABLE MATERIALS:

- Draft Resin: Prints 3–4 times faster. Ideal for prototyping.
- Clear Resin: Translucent resin for showcasing internal parts, lighting and fluids.
- Castable Wax Resin: 20% Wax-filled photopolymer. Ideal for High resolution. Commonly used in Jewelry & dental applications.
- Durable Resin: High elongation and high impact strength. Smooth and glossy finish.
- Tough Resin: Strong functional parts for assemblies under stress or strain.
- High Temp Resin: Heat deflection temp of 460°F.
- Flexible Resin: 80A Shore durometer for flexible parts with matte-black soft touch finish.
- Model Resin: High precision with smooth matte surface. Ideal for approval designs, figurines & miniatures.



Sindoh 3DWox 2X, Dual Nozzle

Our dual nozzle Sindoh is an excellent option for those in need of a quick prototype. Printing with the Sindoh 3DWox is a very cheap, cost-effective method for reviewing a design before putting a part into production.



BUILD VOLUME:
8.9" x 7.9" x 11.8" (228 x 200 x 300mm)

LAYER THICKNESS:
.0019"–.016" (.05mm–.04mm)

AVAILABLE MATERIALS:

- PLA: Polylactic Acid. Easy to print, low temperature and biodegradable. Ideal for rapid prototyping and inexpensive.
- PETG: Chemical resistant, recyclable and high strength.
- Flexible: High elasticity rubber and soft plastic like texture.